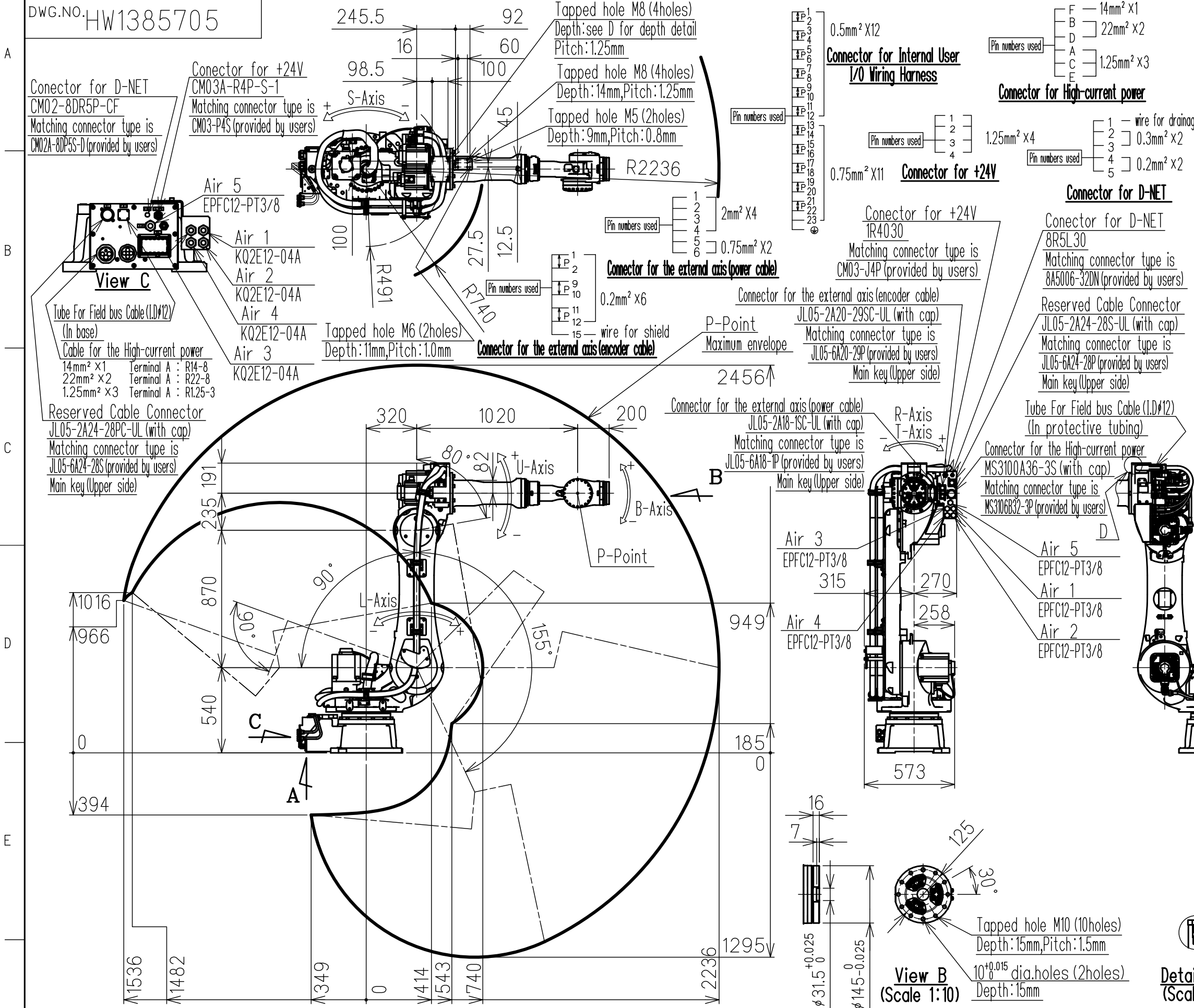


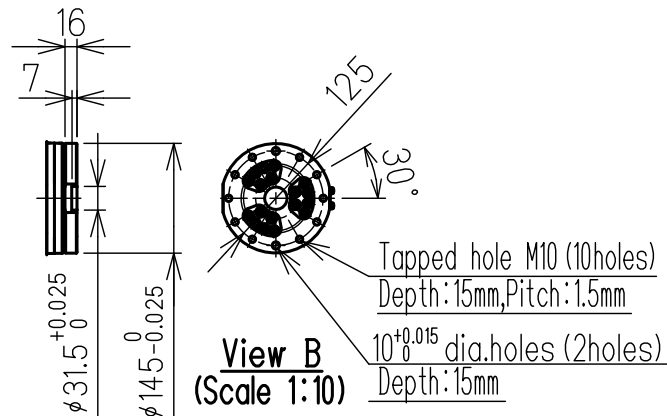
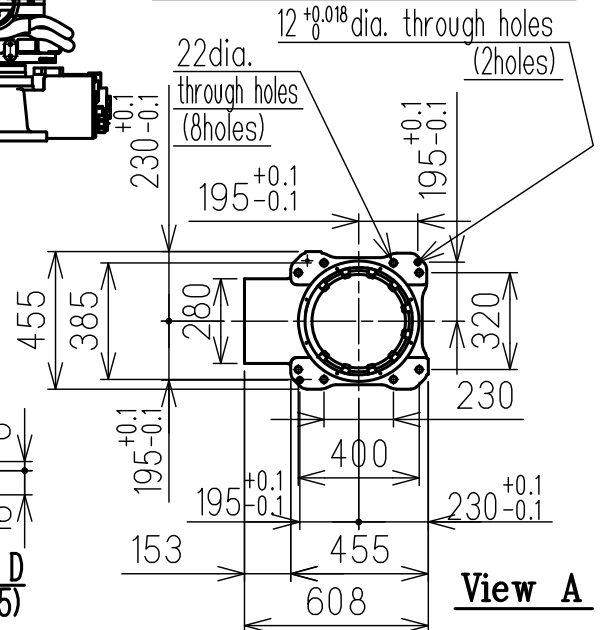
DWG.NO. HW1385705



Item	Model	MOTOMAN-GP110
Configuration		Vertically articulated
Degree of Freedom		6
Payload	Wrist	110kg
	On U-arm	10kg
Repeatability (※1)		-0.07mm - +0.07mm
Range of Motion	S-Axis	-180° - +180°
	L-Axis	-90° - +155°
	U-Axis	-80° - +90°
	R-Axis	-360° - +360°
	B-Axis	-125° - +125°
	T-Axis	-360° - +360°
Max Speed	S-Axis	2.45 rad/s, 140°/s
	L-Axis	1.92 rad/s, 110°/s
	U-Axis	2.27 rad/s, 130°/s
	R-Axis	3.05 rad/s, 175°/s
	B-Axis	3.05 rad/s, 175°/s
Allowable Moment	R-Axis	721N·m (73.5kgf·m)
	B-Axis	721N·m (73.5kgf·m)
	T-Axis	294N·m (30kgf·m)
Allowable Inertia (GD ² /4)	R-Axis	60kg·m ²
	B-Axis	60kg·m ²
	T-Axis	33.7kg·m ²
Approx. Robot mass		660kg
Protected structure		Body: IP54 Wrist: IP67
Mounting method		Floor-mounted
Ambient Conditions	Temperature	0 to +45°C
	Humidity	20 to 80%RH (Non-condensing)
	Vibration	4.9m/s ² (0.5G) or less
	Altitude	1000m or less
Others		<ul style="list-style-type: none"> Free from explosive or corrosive gas and liquid. Free from dust, soot, oil, or water. Free from electrical noise. Free from strong magnetic fields.
Power Requirements		5.0kVA
Controller		YRC1000

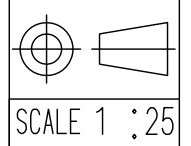
※1 Repeatability is conformed to ISO 9283.
 ※2 The manipulator is in the home position.
 Unit: mm

Type	Note
YR-1-06VX110-A00	Default Specifications



Note:
 1. All rights reserved.
 2. Please note that the data is subject to be deleted without advance notice.
 3. No warranty is given in relation to the data including the specification.
 4. We are not responsible for any damages or loss caused by the use of the data.

FOR STUDY PURPOSE ONLY



YASKAWA
 株式会社 安川電機

Reference Drawing

TITLE MOTOMAN-GP110
 DIMENSION DIAGRAM

DRWN DATE Sep. 29, '17
 DWG.NO. HW1385705